

# SUPER MINDONG

## Alternator 100% Copper Stator

ST-3KW		3.0HP
ST-5KW		5.0HP
ST-7.5KW		7.5HP
ST-10KW		10.0HP
ST-12KW		12.0HP
ST-15KW		15.0HP
ST-20KW		20.0HP



## Electric Motor 100% Copper Stator

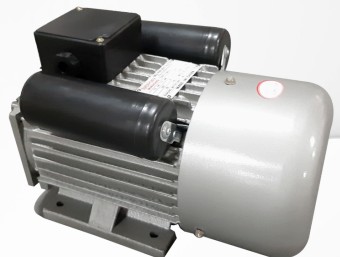


**SINGLE-PHASE**

YC90S-4		1.0HP
YC90L-4		1.5HP
YC100L-4		2.0HP
YC112M-4		3.0HP
YC132B-4		5.0HP
YC132MI-4		7.5HP
YC132M2-4		10.0HP

YC90L-2		3.0HP		HS
YC112M-2		5.5HP		HS
YC132SI-2		7.5HP		HS
YC100LI-4		3.0HP		LS
YC112M-4		5.5HP		LS
YC132S-4		7.5HP		LS

**THREE-PHASE**



# SATO®

## HEAVY DUTY ELECTRIC MOTOR



### Electric Motor Single Phase, 4 Poles, Heavy Duty

Model:	YC90L-4
Power (HP):	1.5
Frequency (Hz):	60
Ampere (A):	10.4
Shafting (mm):	24
Speed (rpm):	1740
Voltage (V):	220
Weight (kg):	19



**CONTACT US**