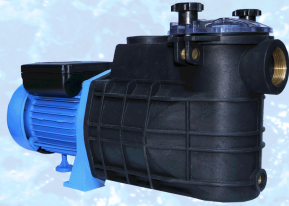


Swimming Pool Pump Series

FCP-370 | 0.5 HP
 FCP-750 | 1.0 HP
 FCP-1100 | 1.5 HP
 FCP-1500 | 2.0 HP
 FCP-2200 | 3.0 HP



A swimming pool pump is a device that circulates water in a pool. It pulls water through a filter, removing debris and contaminants, then pushes the clean water back into the pool. This helps maintain water quality and prevents stagnation.

Stainless Body Submersible Pump Series (For Clean Water)



WQDm-750 | 1.0 HP
 WQDm-1100 | 1.5 HP
 WQDm-1500 | 2.0 HP

Submersible pumps for clean water are designed to operate underwater, with a stainless steel body to resist corrosion and ensure durability. They are versatile, used for tasks like draining flooded areas, irrigation, and supplying water to homes and buildings.

Automatic Pump Control

WE-03 | 220V - 250V



It is a device that automatically controls the operation of a pump. It regulates the pump's activity based on water levels or pressure, ensuring efficient and reliable water supply without the need for manual intervention.

Pressure Tank (Galvanized & Stainless Steel)



GP-12
12 gal.



GP-42
42 gal.



GP-82
82 gal.



GP-21
21 gal.



GP-120
120 gal.

Pump & Tank SET



GP-12	QB-60
GP-21	QB-60
GP-21	JET-60
GP-21	JET-80
GP-21	JET-100

A pressure tank stores water under pressure in a plumbing system to ensure consistent water flow. It releases stored water when demand increases, maintaining steady water pressure for faucets, showers, and appliances.

 CONTACT US



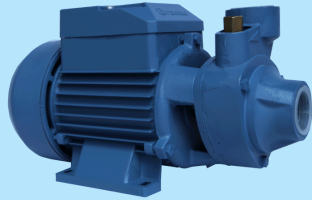
Shallow Well Pump Series

BEST SELLER



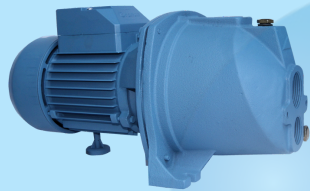
JET-60 | 0.5 HP
JET-80 | 0.75 HP
JET-100 | 1.0 HP
JET-140 | 1.5 HP
JET-160 | 2.0 HP

QB-60 | 0.5 HP



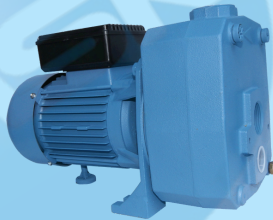
It is a collection or range of pumps designed specifically for drawing water from shallow wells. These pumps are typically used in situations where the water table is relatively close to the surface, allowing them to efficiently draw water from shallow depths.

Deep Well Pump Series



AUJET DP-255 | 0.5 HP
AUJET DP-370 | 0.75 HP
AUJET DP-505 | 1.0 HP

AUJET DP-750 | 1.5 HP
AUJET DP-900 | 2.0 HP



It is a line of pumps designed to extract water from deep wells, reaching sources beyond the capabilities of standard shallow well pumps. They're commonly used in areas with limited water access or where water must be drawn from deep underground aquifers.

Centrifugal Pump Series

CPM-180 | 1.5 HP
CPM-200 | 2.0 HP



2DK-16 | 1.5 HP
2DK-20 | 2.0 HP

Nfm130A | 3.0 HP



A centrifugal pump is a machine that moves liquid by spinning it inside a casing, creating pressure that forces the liquid through an outlet. It uses centrifugal force to transfer fluid and is widely used in water supply systems, sewage treatment plants, and industrial processes.

Garden Pump



PQB-250 | 0.5 HP

A garden pump is a device used to move water from one place to another in a garden. It's typically powered by electricity or a gasoline engine and can be used to water plants, fill up ponds or fountains, and perform other tasks requiring water transfer in outdoor spaces.

Submersible Pump

DCV-12V | 45W



A submersible pump is a device used to move fluids like water from one place to another. It's designed to be fully submerged underwater, allowing it to pump water from wells, tanks, or other water sources efficiently.

Stainless Pump Head Series



JTP-35 | 0.5 HP
JTP-40 | 0.75 HP
JTP-45 | 1.0 HP

A submersible pump is a device used to move fluids like water from one place to another. It's designed to be fully submerged underwater, allowing it to pump water from wells, tanks, or other water sources efficiently.

Bathtub Pump Series

JTP-35 | 0.5 HP
JTP-40 | 0.75 HP
JTP-45 | 1.0 HP



A bathtub pump is a device used to circulate water in a bathtub. It helps create jets of water for a relaxing and massaging experience while bathing.